

Social well-being for Auckland

Elizabeth Rowe

Governance for Auckland

Institute of Public Policy AUT

28 April 2009



Today's discussion

- Social well-being – what is it?
- Aucklanders today and tomorrow
- Critical social issues
- Local government and social well-being
- Principles for change

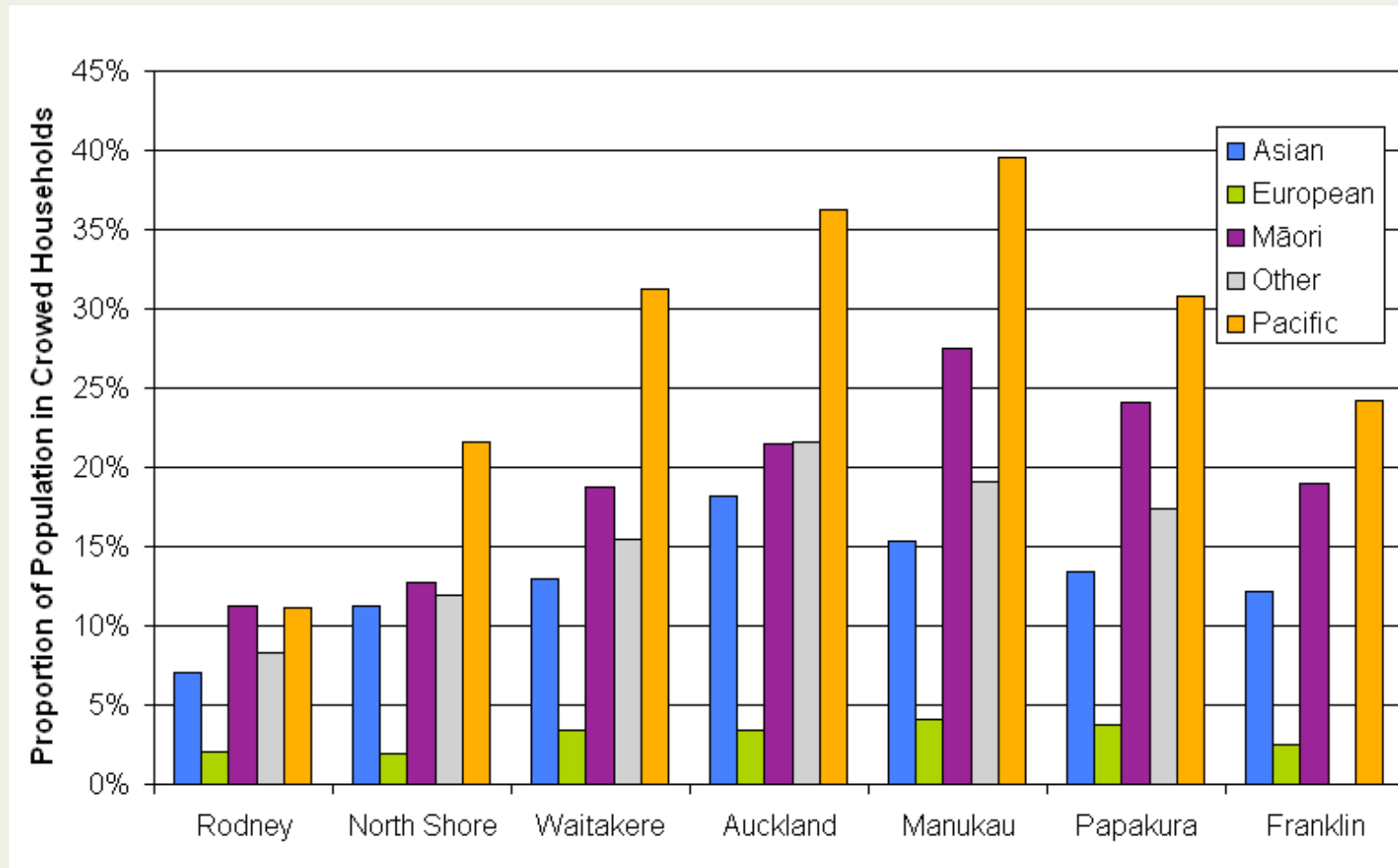
Social well-being

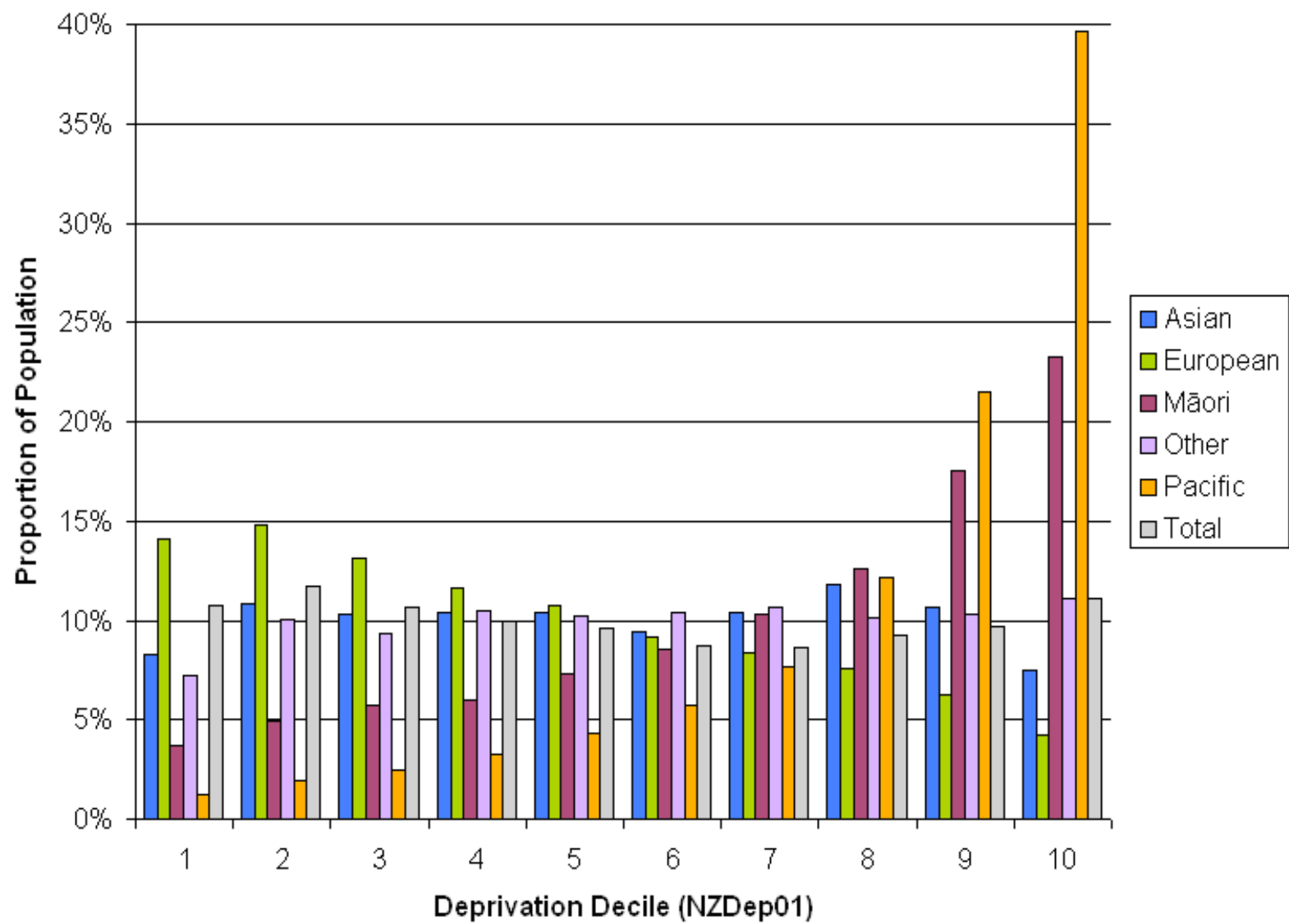
- Who's job is it anyway?
- The main elements of social wellbeing:
 - **Health; knowledge and skills;**
 - **Paid work; economic standard of living;**
 - Civil and political rights; cultural identity;
 - Leisure and recreation; physical environment;
 - **Safety;** social connectedness.
- Social and economic well-being

Aucklanders today and tomorrow

- Demography
- Doing well:
 - Life expectancy, school leaver qualifications, hourly earnings, road and workplace safety, suicide rates, rates of cigarette smoking, home internet access
- Doing badly:
 - early childhood education, household crowding and telephone access at home.
- Where you live counts...
- So does your ethnicity

Crowded housing, location and ethnicity





Critical social issues

- Help all children to get the best start in life
- Improve the transition of young people from school to work, further education or training
- Improve public transport, particularly to disadvantaged communities
- Improve the quality and affordability of housing

Local government and social well-being

- Their role
- How effective do stakeholders think they are?
 - Do the processes work?
 - How strong are the links with others?
 - How well do they serve different population groups and communities?
- The result

What's missing?

- Leadership, vision and values
- A single system
- Maintaining momentum: “follow through and follow up”
- Good data, widely shared, and robust research and analytic capacity
- The power of Councils' core business to improve social well-being

Principles for change

- Social well-being is a **system** involving many players. The core elements of any new system should be formally **mandated**.
- **Strong leadership** and **advocacy**
- Critical **capacities** built in and funded
- Critical **participation** built in and funded
- **Effective consultation** on the right issues is more important than comprehensive consultation on everything.

Principles ctd

- The core decision-making body (or process) must include all those who have **accountability** for social outcomes, and can commit resources.
- It must be big enough to **redistribute resources** to achieve social goals: this means it should be regional, and boundaries in central and local government should be aligned.
- **Results** must be publically visible at the local as well as the regional level
- **Action** should take place as close to the ground as is feasible.